

Quick Start Guide for CIM QuikWare Software

STEP 1

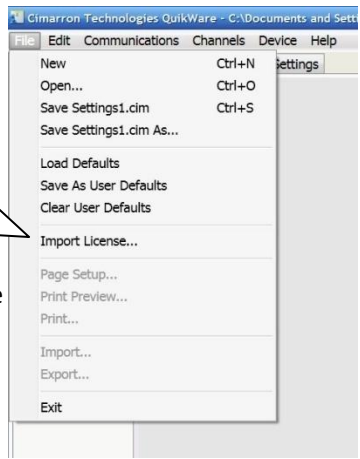
You will have received an installation program called QuikWare.exe with an icon like this:



The program is distributed either on a CD or can be downloaded from our website www.cimtechcorp.com. Click the Icon and follow the installation directions. The routine will check your computer system and install required components.

STEP 2

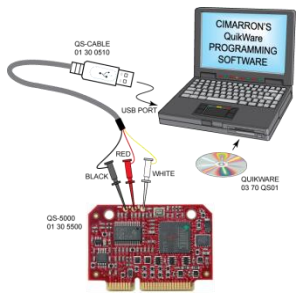
When the installation is complete, you will need to import the license. Start QuikWare and on the menu bar, select File and then click on "Import License".



NOTE:
Beginning with QuikWare rev 1.1.21, importing a license is only required for programming encryption capable boards. CIM-1200 and CIM-2200 programming does not require the purchase or importing of a license.

You will be asked for the location of the .cimlicense file. This will be either on your CD, or if you downloaded the QuikWare, Cimarron will email you your license at time of purchase.

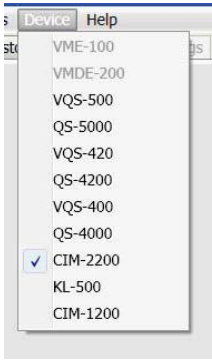
STEP 3



QuikWare software is used to program the CIM-1200/2200 board with the Cimarron QuikSync USB cable. Attach the cable as shown using the three "grabbers".

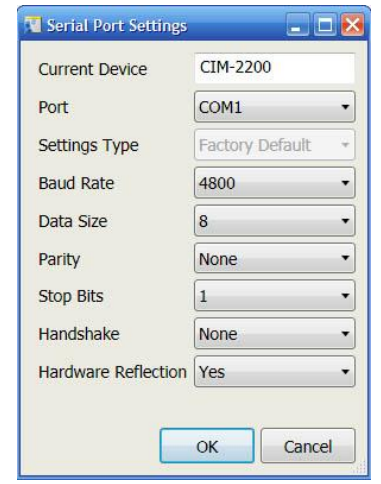
STEP 4

Now, go to "Device" in the menubar and select CIM-1200 or CIM-2200.



STEP 5

Configure the QuikWare to access the correct communications port on the computer. Select "Communications" and "Setup" and select the COM port that your programming cable is connected.



STEP 6

Refer to the Programming chapter of the CIM manual for information regarding available programming parameters. Make all required changes.

STEP 7

Write the parameters to the board.

From the menu bar, select "communications". You can choose to "Send All" or if you only changed settings in Global or Channel areas, "Send Global" or "Send Channel".

